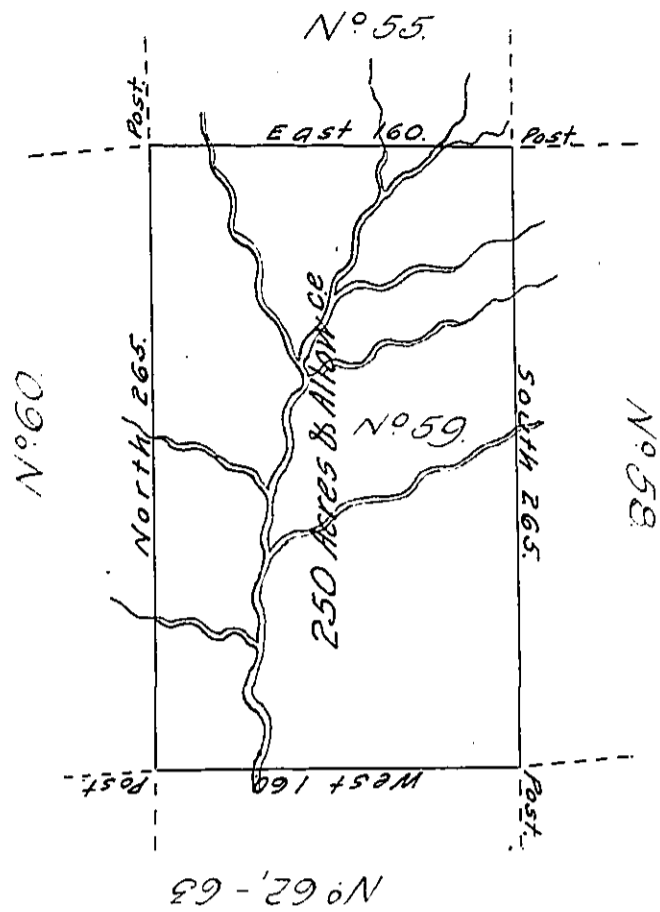


✓



Situate on the Waters of Brush Creek Between the thirteenth & fourteenth Parallel-in that Part of District N° 3, to me Allotted on the North side of the River Ohio, being Part of the Land Appropriated for the Redemption of the Certificates of depreciation &c.

Surveyed in June 1785, Pursuant to Instructions from Instructions from Jn^o Lukens, Esquire, Surveyor Genl dated at Philad- 5th March 1785.

Nat^l Breeding, D.S.

IN TESTIMONY that the above is a copy of the original remaining on file in the Department of Internal Affairs of Pennsylvania, made conformably to an Act of Assembly approved the 16th day of February, 1833, I have hereunto set my Hand and caused the Seal of said Department to be affixed at Harrisburg, this seventeenth day of April 1906.

Loach D. Brown
Secretary of Internal Affairs.